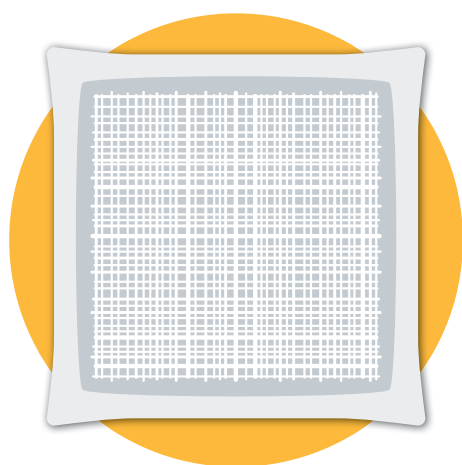


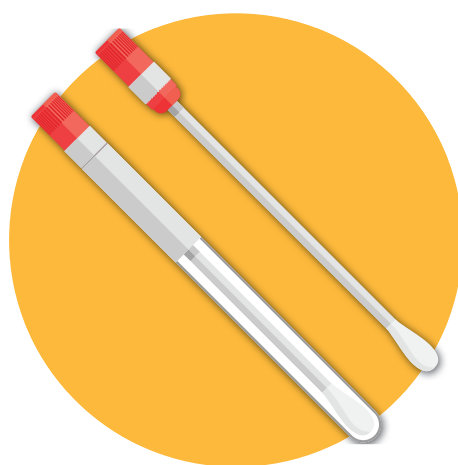
# Yellow Bags

## Used for:

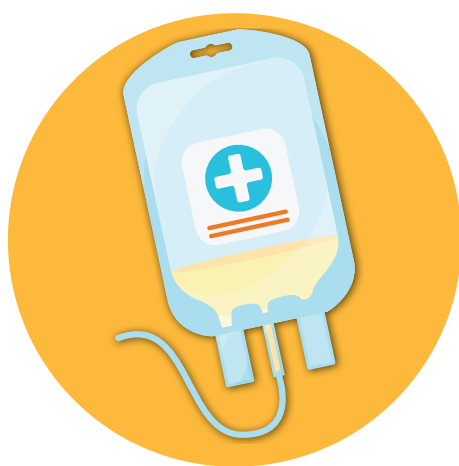
Infectious or potentially infectious clinical waste  
**contaminated with medicines or chemicals.**



Medicated dressings  
and wipes



Swabs



IV Bags & Tubing



PPE (contaminated with  
chemicals / medicine)

## Do not use for:



General waste



Glass



Gas canisters



Sharps



Free Liquids



Rigid items likely to  
puncture the bag



**Bags should be filled no more than two thirds full OR  
to a maximum weight of 8kg, whichever is reached first.**

Bags should be sealed at the point of  
production using the swan-neck method.

